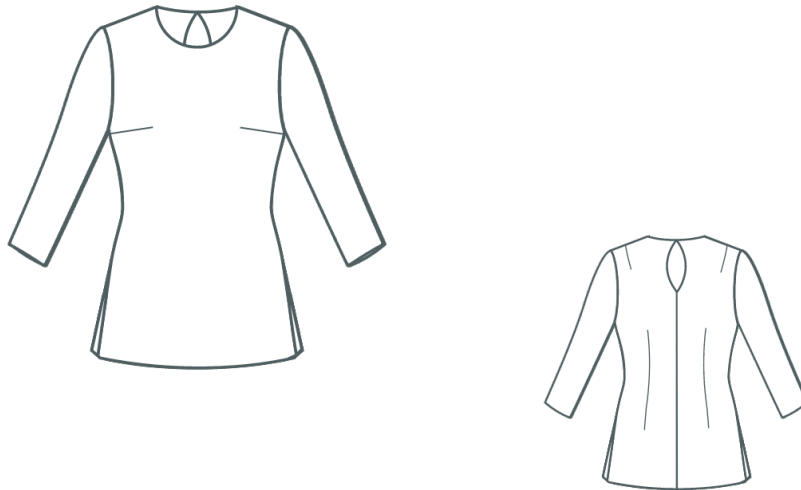


## Technical Sketch

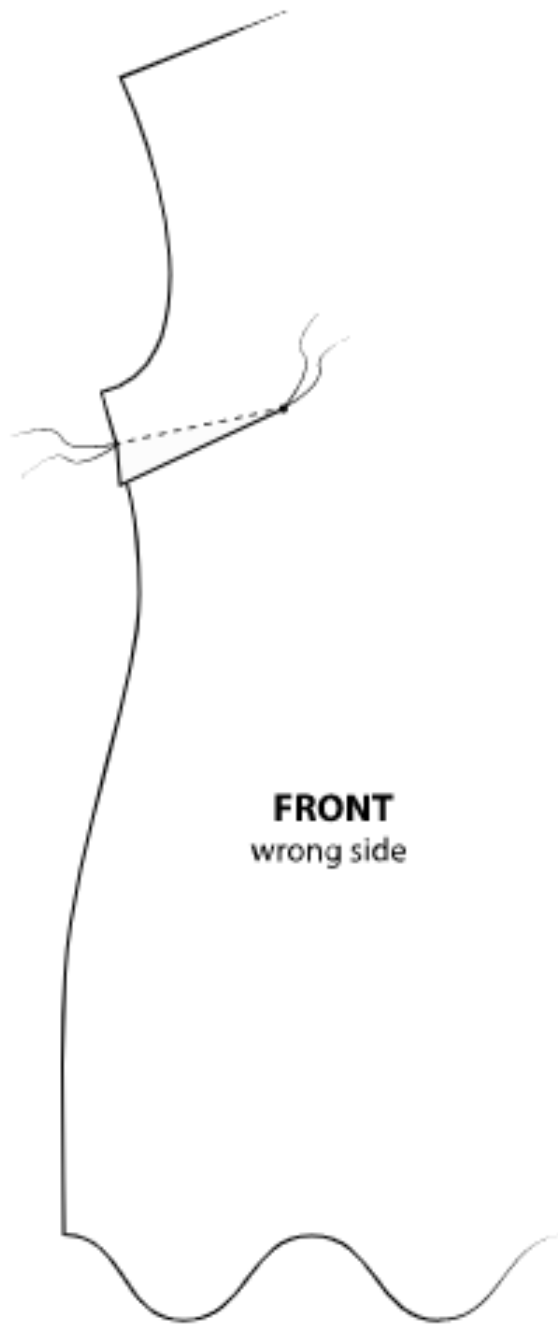
Woven, No Waist Seam, No Seam, Key Hole, Bracelet Fitted Sleeves, Round Jewel Neck, Back Curved Seam and No Zipper, Neckline Facing



## Sewing Instructions

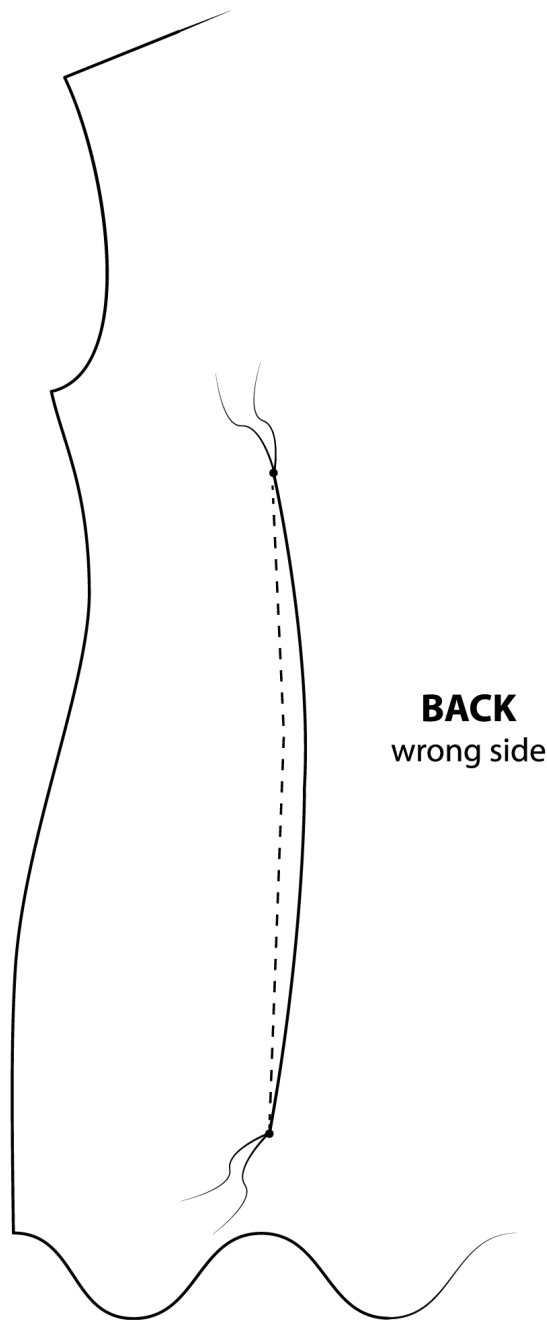
### Sewing Darts on the Front

- Stitch bust darts along the marked line on the Front, starting from the side seam and sewing towards the apex. Backstitch at the beginning, leaving a long thread tail at the dart tip.
- Knot the thread tails at the dart tip.
- Press down.
- Staystitch the neckline on the Front.



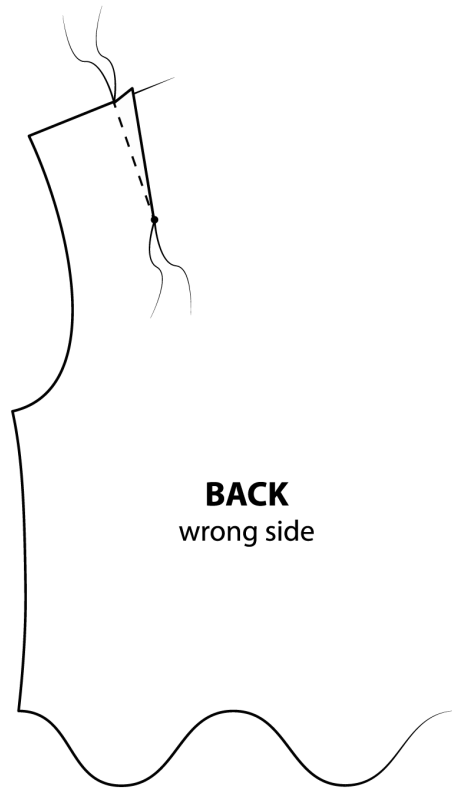
### Sewing Darts on the Back

- Stitch waist darts on the Back from point to point along the marked line. Do not backstitch at the points, leaving long thread tails at the dart tip.
- Knot the thread tails at the dart tip.
- Press toward center.
- Staystitch the neckline on the Back.



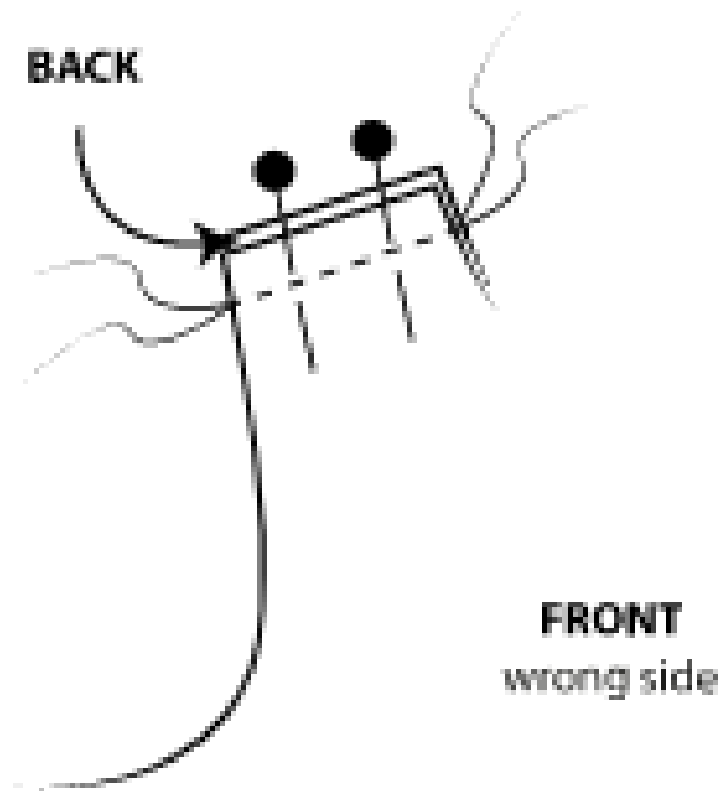
### Sewing Shoulder Darts on the Back

- Stitch shoulder darts along the marked line on the Back, starting from the shoulder seam and sewing towards the center back. Backstitch at the beginning, leaving a long thread tail at the dart tip.
- Knot the thread tails at the dart tip.
- Press toward center.
- Staystitch the neckline on the Back.



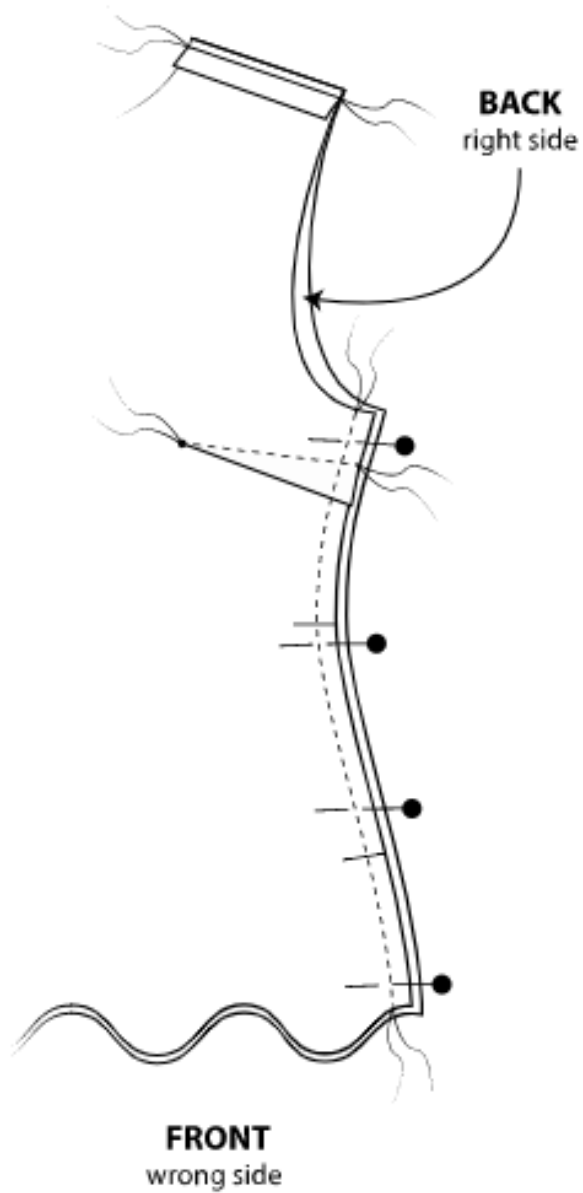
### Sewing the Shoulders

- With right sides together, pin Front to Back at shoulders, then stitch. Finish the seam allowances separately and press open.



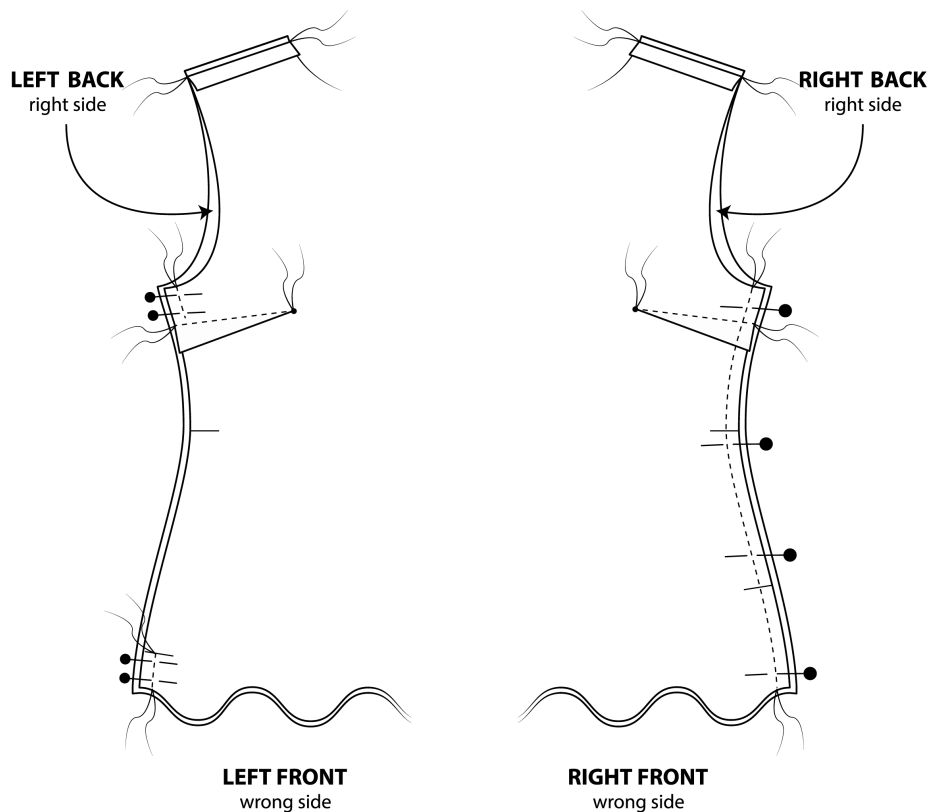
### Sewing Side Seams

- With right sides together, pin Front to Back at Sides, then stitch from armhole down to the hem. Finish the seam allowances separately and press open.



### Sewing Side Seams

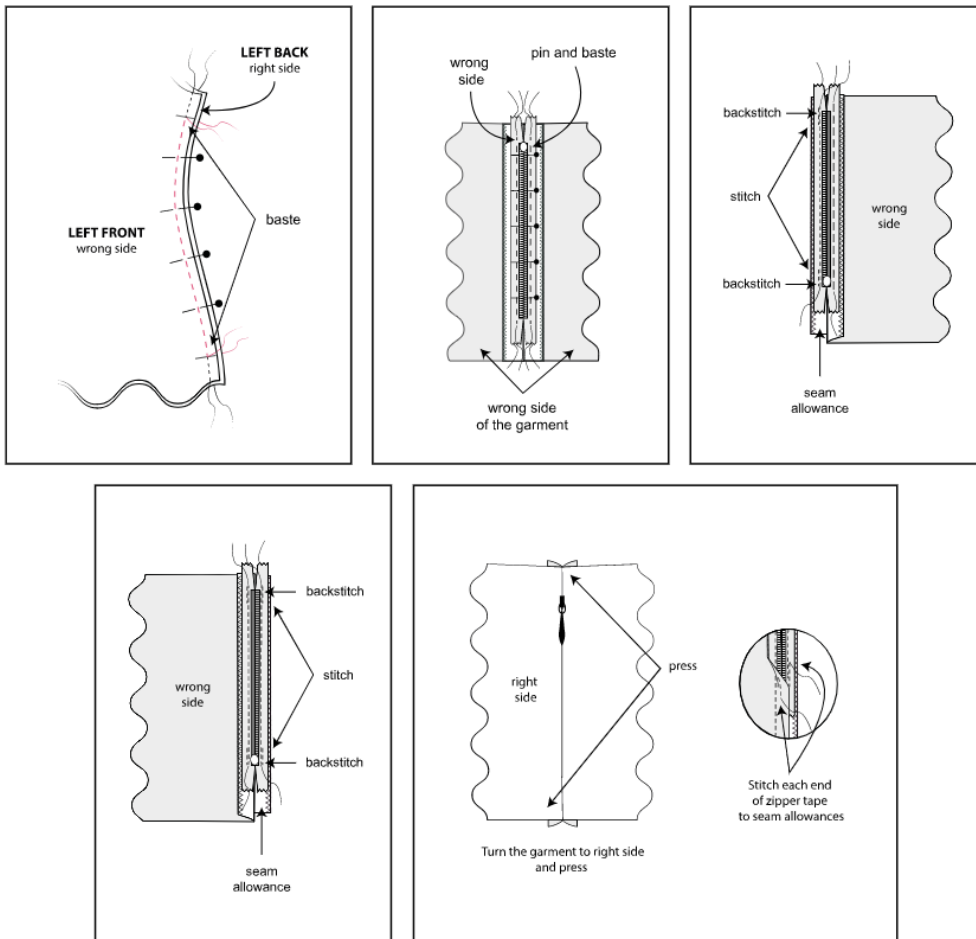
- With right sides together, pin Front to Back at right side seam, then stitch.
- Stitch the left side seam, leaving an opening between zipper notches.
- Finish the seam allowances separately and press open.



### Setting Side Seam Invisible Zipper

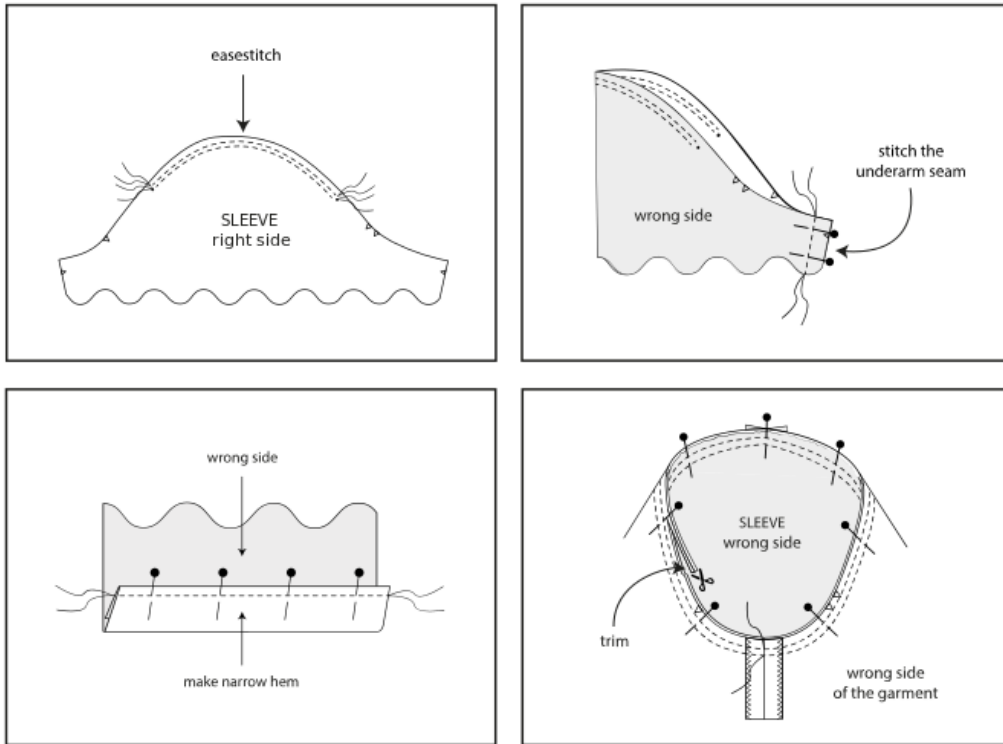
Note: Use special invisible zipper foot when stitching invisible zipper. Zipper can be trimmed (remove the excess zipper length from the bottom, secure the new end of the zipper by stitching over the zipper teeth using a bar tack).

- Pin the remainder of left side seam, then baste between zipper notches. Press open.
- Pin the closed zipper tape face down to seam allowances, placing zipper teeth on seamline, aligning centers and matching notches. Baste.
- Undo the basting stitch that was keeping front and back side seams together.
- Open the zipper. Position left-hand groove of zipper foot over teeth and stitch close to teeth, starting at the top of the edge and stitch up to the zipper notch. Backstitch at the beginning and the end.
- Position right-hand groove of the zipper foot over teeth and stitch the zipper tape to the right opening edge, starting at the top of the edge and stitch up to the zipper notch. Backstitch at the beginning and the end.
- Undo the basting stitch. Press.
- Stitch or hand sew each end of zipper tape to seam allowances, keeping the garment free when stitching.



## Setting the Sleeves

- Easestitch the sleeve cap between small circles, leaving long thread tails. Stitch at 1/2" (1.3 cm), using long machine stitches, then stitch 2nd row 1/4" (6mm) away inside seam allowance.
- Stitch the underarm seams.
- Use 5/8" (1.5cm) narrow hem at lower edge: turn the hem in, then press. Ease in fullness if necessary. Open out hem, turn in again so that raw edge is aligned along with the crease, then press. Turn in along the crease and stitch.
- Insert one sleeve into the armhole, right sides together, matching notches and seams. Match the center sleeve notch with the shoulder seam. Adjust the ease of the sleeve cap, by pulling thread tails, then baste and stitch.
- Stitch again 1/4" (6mm) away inside the seam allowance. Serge the seam. Press seam towards the bodice.



## Neckline

Apply fusible interfacing to the wrong side of the Front and Back Neck Facings, following manufacturer's instructions.

- With right sides together, pin Front Facing to Back Facing at shoulders, then stitch. Press (according to the chosen model).
- Stitch the center back seam of the keyhole.
- To make a Loop on the back, fold the Loop in half lengthwise, right sides together, then stitch 1/4" (6mm) from the folded edge, leaving the ends open.
- Fasten a heavy thread to one end of the Loop, then push needle through the strip to turn the Loop right side out.
- On outside, pin the Loop to the back, centering over notches, then baste.
- Finish facing's outer edge.
- With right sides together, pin facings to the Shell, matching notches, centers and seams.
- Stitch around the neckline and keyhole back. Trim. Clip into the center point of the keyhole.
- Understitch facing, then turn facing to inside. Press.
- Tack at shoulders.

